

UTA Board of Trustees Meeting

April 24, 2019



Call to Order and Opening Remarks



Pledge of Allegiance



Safety First Minute



**Don't let April Showers bring you hospital flowers.
Stay alert when driving in wet conditions.**



UTA 
SAFETY & SECURITY

April 2019



Public Comment Period



Public Comment Guidelines

- Each comment will be limited to two minutes per citizen or five minutes per group representative
- No handouts allowed



Approval of April 17, 2019 Board Meeting Minutes

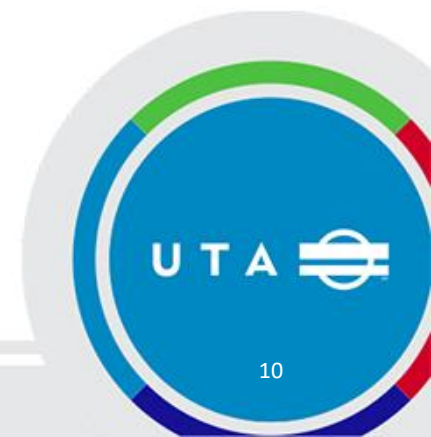


Recommended Action (by acclamation)

Motion to approve



Agency Report

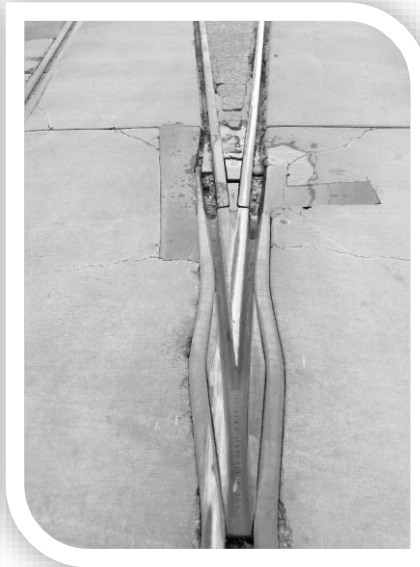


Outreach Plan for Main Street Rail Replacement



What & Why?

UTAH TRANSIT AUTHORITY



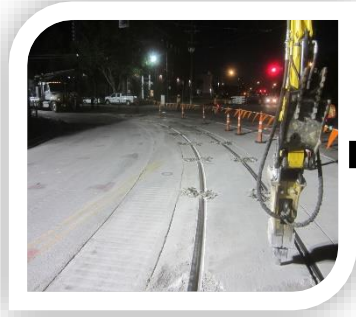
- **Replace Half Grand Union & 150 S Turnouts**
- **18 Years Old & Must Replace**



Construction Process



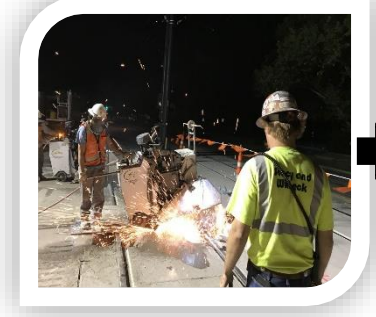
Build
Turnout



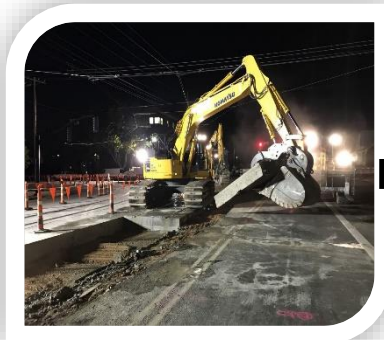
Demo
Concrete



Sawcut
Concrete



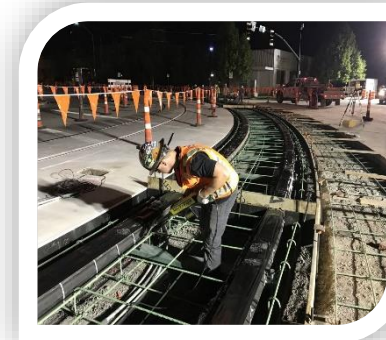
Sawcut
Rail



Remove
Track



Subgrade
Prep



Skeletonize
Turnout



Weld &
Test

Pre-Construction: *Apr 15 – May 3*

Construction Hours:

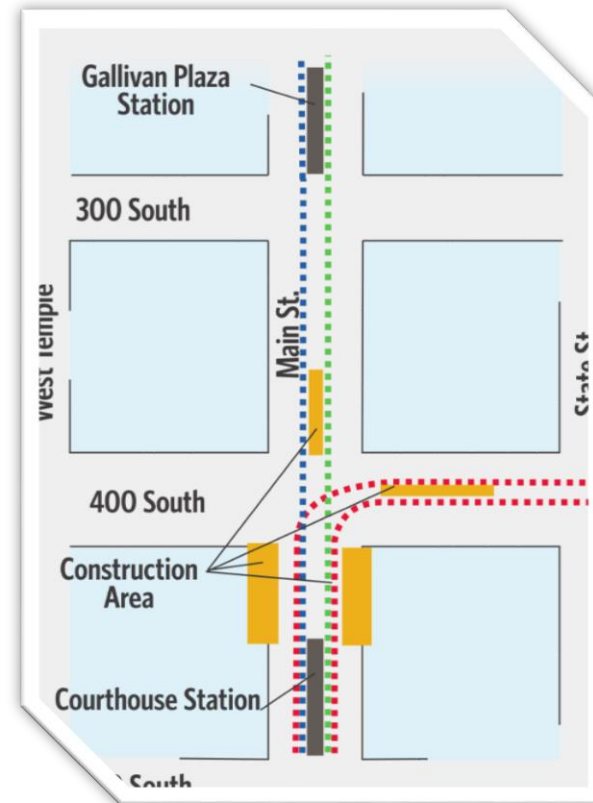
- 11 p.m. - 5 a.m.
- Mobile sound screen will be used to reduce noise

Construction Location:

- 400 South Main Street Intersection

Vehicle Options:

- Full access to all roads from 5 a.m. - 11 p.m.
- Possible single lane closures from 11 p.m. - 5 a.m.



Pre-Construction Communications

■ Businesses & Residents

- Community Presentations
- Brochure and Flyers
- Resident Door Hangers
- Project Website
- Downtown Alliance, Chamber & SLC Blog, Email & App

■ Drivers:

- UDOT Freeway Signs
- UDOT Blog, Social & App
- Detour Signs & Cones
- 2 Week Radio Flight

Media:

- Press Conference
- Press Kit

Riders:

- Website
- Twitter
- Facebook
- Handouts
- Station Signs
- A-Frame Signs
- Bus Signs

April 15 - May 3

RAIL REPLACEMENT CONSTRUCTION

Pre-construction

Construction Hours: 11 p.m. to 5 a.m.

Construction Location: 400 South and Main Street Intersection

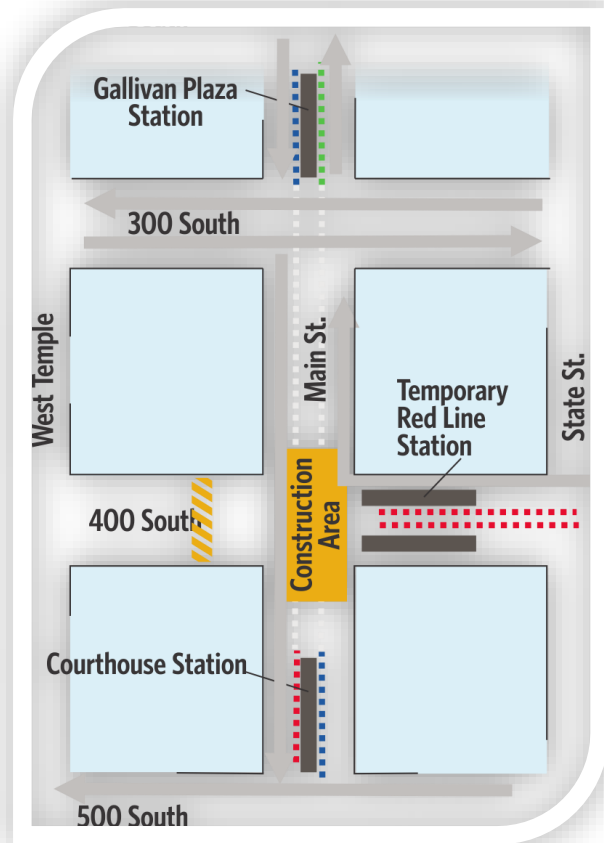
Vehicle Options:

- Full access to all roads from 5 a.m. to 11 p.m.
- Possible single lane closures from 11 p.m. to 5 a.m.

UTA 801-RIDE-UTA rideuta.com/construction



PHASE I: *May 4-22*



Construction Hours:

- 24 Hours, 7 Days a Week

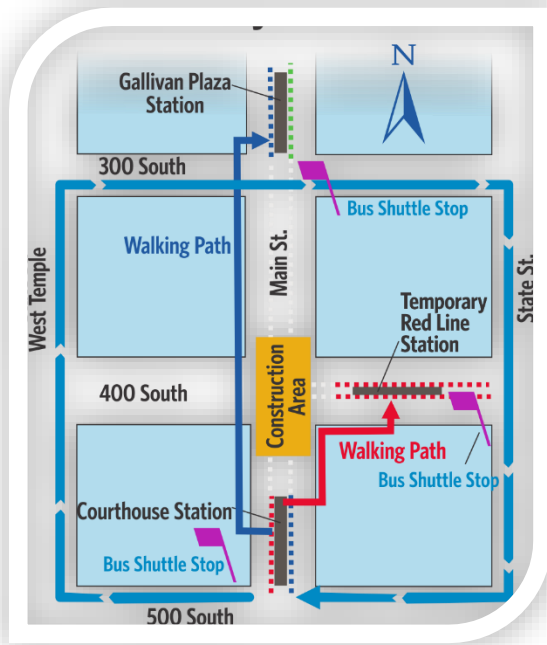
Construction Location:

- 400 South Main Street Intersection

Vehicle Options:

- I-15: use Beck Street, 600 North or 600 South
- Northbound: use West Temple or State Street
- Southbound: all streets are open
- Eastbound: use 200, 300 or 600 South
- Westbound: use 200, 300 or 500 South

PHASE I: *UTA Riders*



FrontRunner: *(no delays)*

North of 400 South: Exit at North Temple Station to catch Green Line for City Center and Gallivan Plaza Stations

South of 400 South: Use stations south of Salt Lake Central Station if possible

To the University of Utah: Exit at Salt Lake Central Station to take bus route 2, 2X, 3 or 11 to the university

Green Line: *(5-10 min delays)*

Exit TRAX at Central Point Station to transfer to the Blue Line. Exit Courthouse Station to walk or ride a bus shuttle to Gallivan Station to get back on the Green Line.

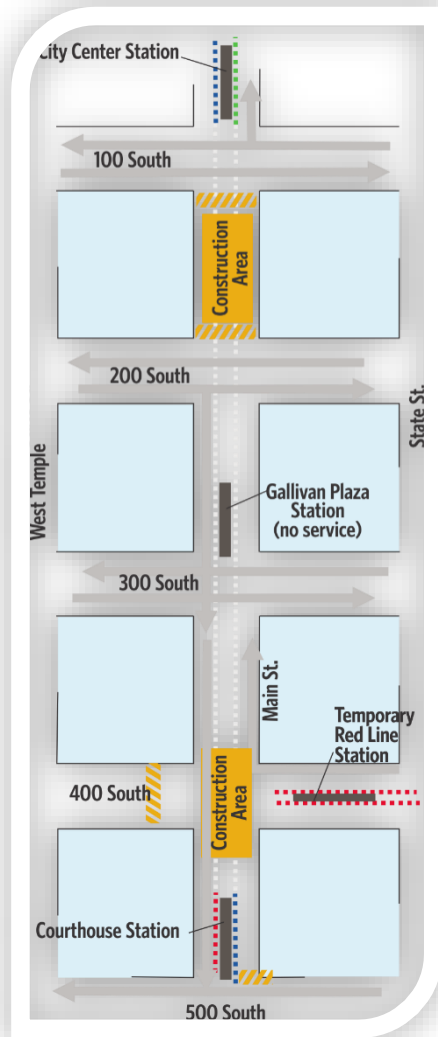
Blue Line: *(5-10 min delays)*

Exit TRAX at Courthouse Station to walk or ride a bus shuttle to the Gallivan Station to get back on the Blue Line

Red Line: *(10-20 min delays)*

Exit TRAX at Courthouse Station to walk or ride a bus shuttle to a Temporary Station to get back on the Red Line

PHASE II: *May 23-28*



Construction Hours:

24 Hours, 7 Days a Week

Construction Locations:

400 South Main Street Intersection

150 South Main Street

Vehicle Options:

I-15: use Beck Street, 600 N or 600 South

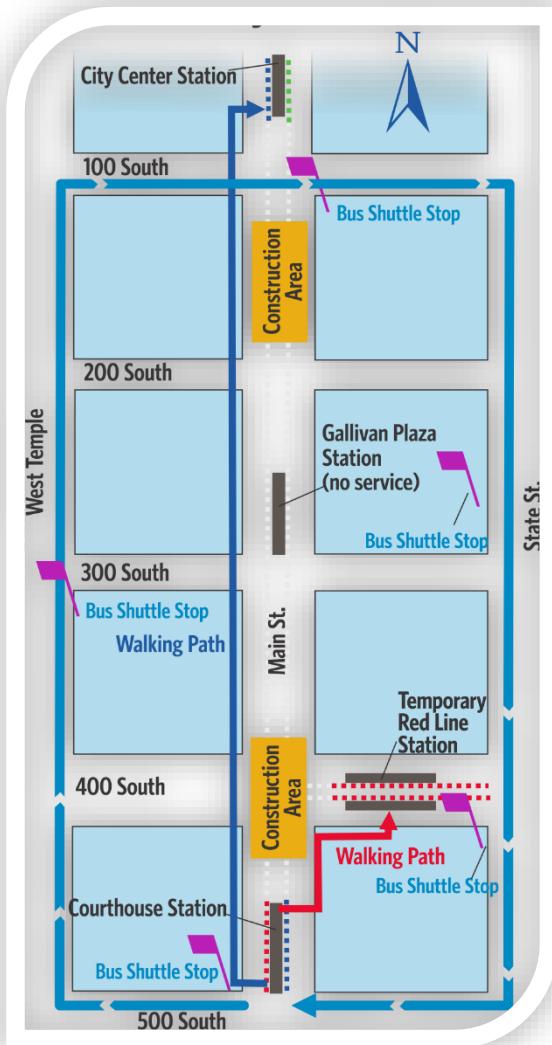
Northbound: use West Temple or State Street

Southbound: all streets are open

Eastbound: use 100, 200, 300 or 600 South

Westbound: use 100, 200, 300 or 500 South

PHASE II: UTA Riders



FrontRunner: *(no delays)*

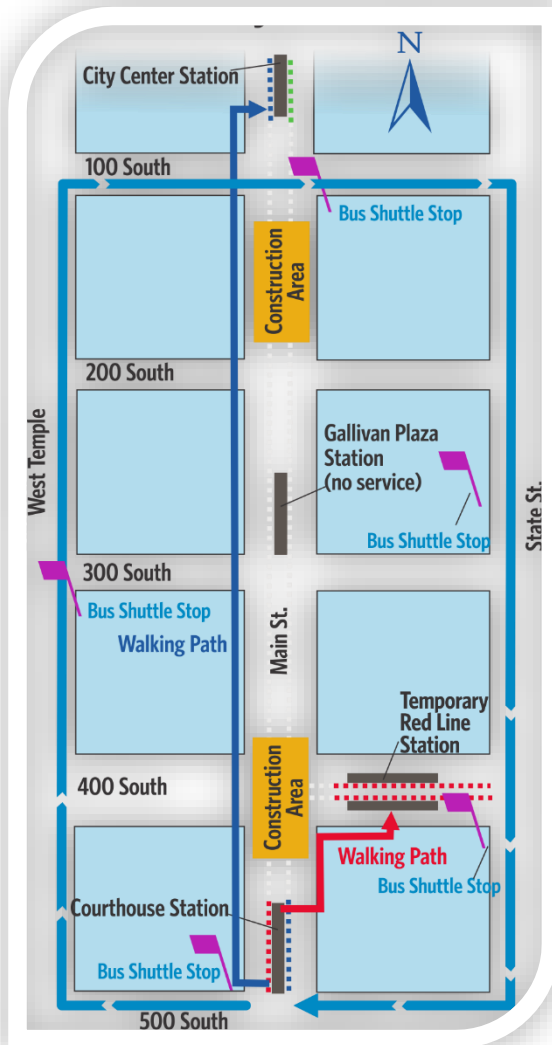
North of 100 South: Exit at North Temple Station to catch Green Line for City Center and Gallivan Plaza Stations

South of 400 South: Use stations south of Salt Lake Central Station if possible

To the University of Utah: Exit at Salt Lake Central Station to take bus route 2, 2X, 3 or 11 to the university



PHASE II: UTA Riders



Green Line: (5-10 min delays)

Exit TRAX at Central Point Station to transfer to the Blue Line. Exit Courthouse to walk or ride a bus shuttle to City Center Station to get back on the Green Line.

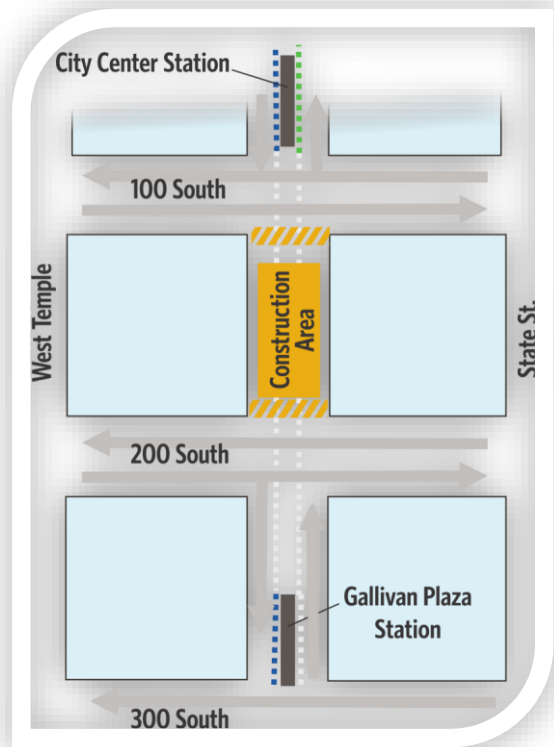
Blue Line: (5-10 min delays)

Exit TRAX at Courthouse Station to walk or ride a bus shuttle to the City Center Station to get back on the Blue Line

Red Line: (10-20 min delays)

Exit TRAX at Courthouse Station to walk or ride a bus shuttle to a Temporary State Street Station before proceeding on the Red Line towards the U of U.

PHASE III: *May 28 - June 2*



Construction Hours:

24 Hours

Construction Location:

150 South Main Street

Vehicle Options:

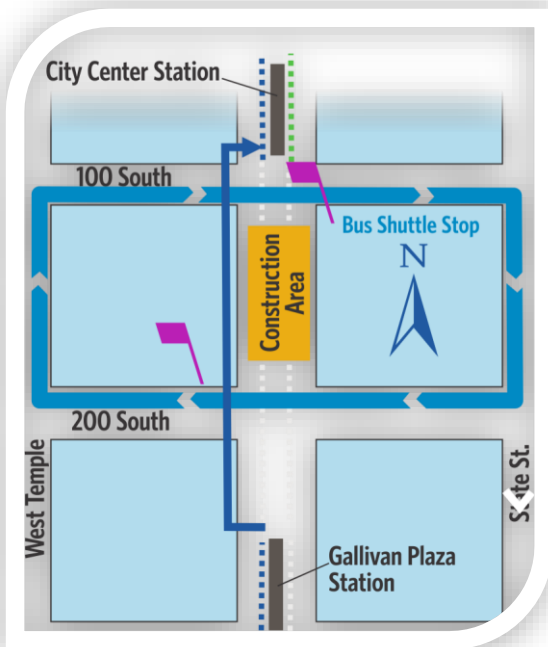
I-15: all exits open

North or Southbound: use West Temple or State Street

East & Westbound: all streets open



PHASE III: *Riders*



FrontRunner: *(no delays)*

North of 100 South: Exit at North Temple Station to catch Green Line for City Center

South of 200 South: Use stations south of Salt Lake Central Station is possible

Green Line: *(5-10 min delays)*

Exit TRAX at Central Point Station to transfer to the Blue Line. Exit Gallivan Station to walk or ride a bus shuttle to City Center Station to get back on the Green Line.

Blue Line: *(5-10 min delays)*

Exit TRAX at Gallivan Station to walk or ride a bus shuttle to the City Center Station to get back on the Blue Line

Red Line: *(5 min delays)*

Ride the Red Line to every station.

PHASE I-III Communications

Riders:

- Flyers - all 3 Phases
- Train Announcements
- Temporary Schedules
- Station Signs
- A-Frame Directional Signs
- Volunteers at 4 Stations
- Customer Service

Drivers:

- UDOT Freeway Digital Signs
- Detour Signs & Traffic Control
- Radio Liners

Media:

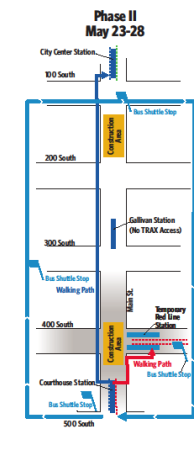
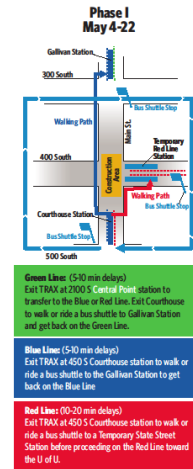
- Press Release
- Weekly Advisory

Digital:

- Project Website
- Daily Social
- Weekly Emails
- App Notifications

Daily Meetings:

- Ops & Comms



Phase II May 23-28

Green Line (5-10 min delays)
Exit TRAX at Central Point to transfer to a Blue Line. Exit Courthouse to walk or ride a bus shuttle to City Center Station to get back on the Green Line.

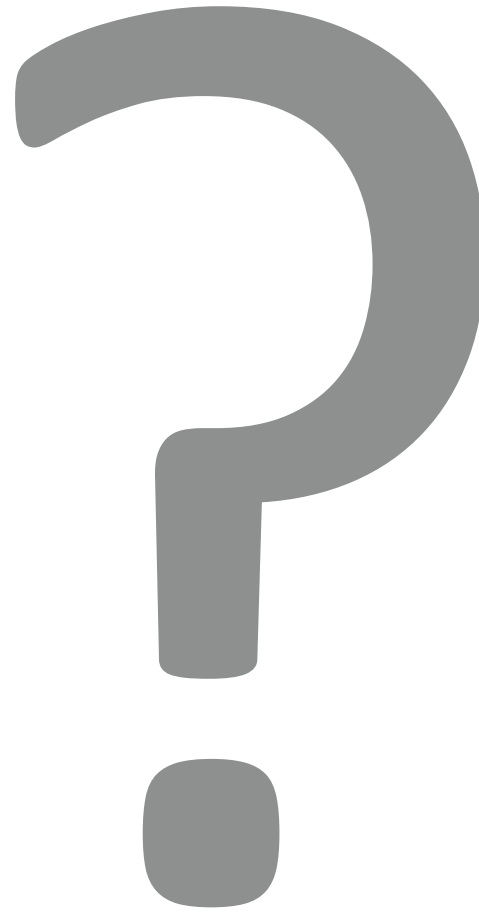
Blue Line (5-10 min delays)
Exit TRAX at Courthouse to walk or ride a bus shuttle to the City Center Station to get back on the Blue Line.

Red Line (10-20 min delays)
Exit TRAX at Courthouse to walk or ride a bus shuttle to a Temporary State Street Station before proceeding from Library to U of U Stations.



Any Questions

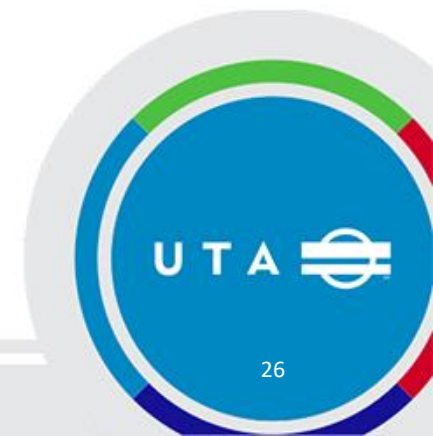
UTAH TRANSIT AUTHORITY



Emergence Program Completion



Financial Report – March 2019

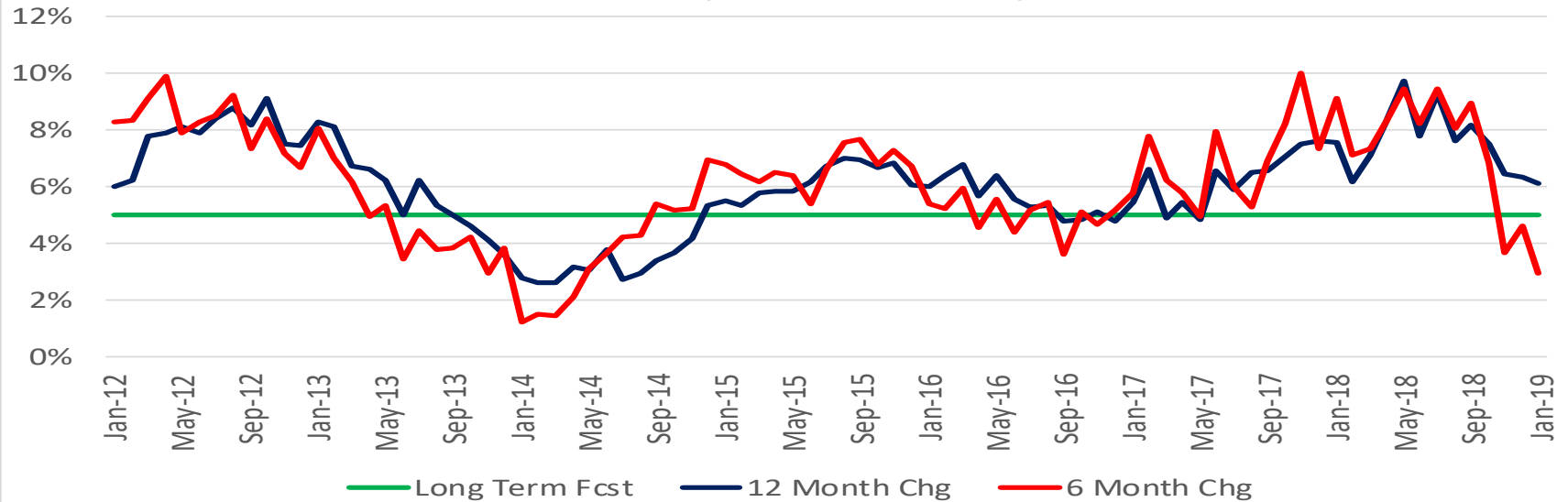


March 2019 Dashboard

Financial Metrics	Mar Actual	Mar Budget	Fav/ (Unfav)		YTD Actual	YTD Budget	Fav/ (Unfav)	
				%				%
Sales Tax (January '19 mm \$)	\$ 21.6	\$ 20.6	\$ 1.02	● 4.9%	\$ 21.6	\$ 20.6	\$ 1.02	● 4.9%
Fare Revenue (mm)	\$ 5.7	\$ 4.5	\$ 1.24	● 27.6%	\$ 13.8	\$ 13.5	\$ 0.27	● 2.0%
Operating Exp (mm)	\$ 23.4	\$ 24.3	\$ 0.93	● 3.8%	\$ 69.3	\$ 73.3	\$ 3.98	● 5.4%
Subsidy Per Rider (SPR)	\$ 4.68	\$ 5.40	\$ 0.72	● 13.3%	\$ 5.03	\$ 5.40	\$ 0.37	● 6.9%
UTA Diesel Price (\$/gal)	\$ 2.07	\$ 2.50	\$ 0.43	● 17.1%	\$ 1.91	\$ 2.50	\$ 0.59	● 23.8%
Operating Metrics	Mar Actual	Mar-18	F/ (UF)	%	YTD Actual	YTD 2018	F/ (UF)	%
Ridership (mm)	3.77	3.82	(0.1)	● -1.3%	11.05	10.98	0.1	● 0.6%
Alternative Fuels	CNG Price (Diesel Gal Equiv)		\$ 1.78					

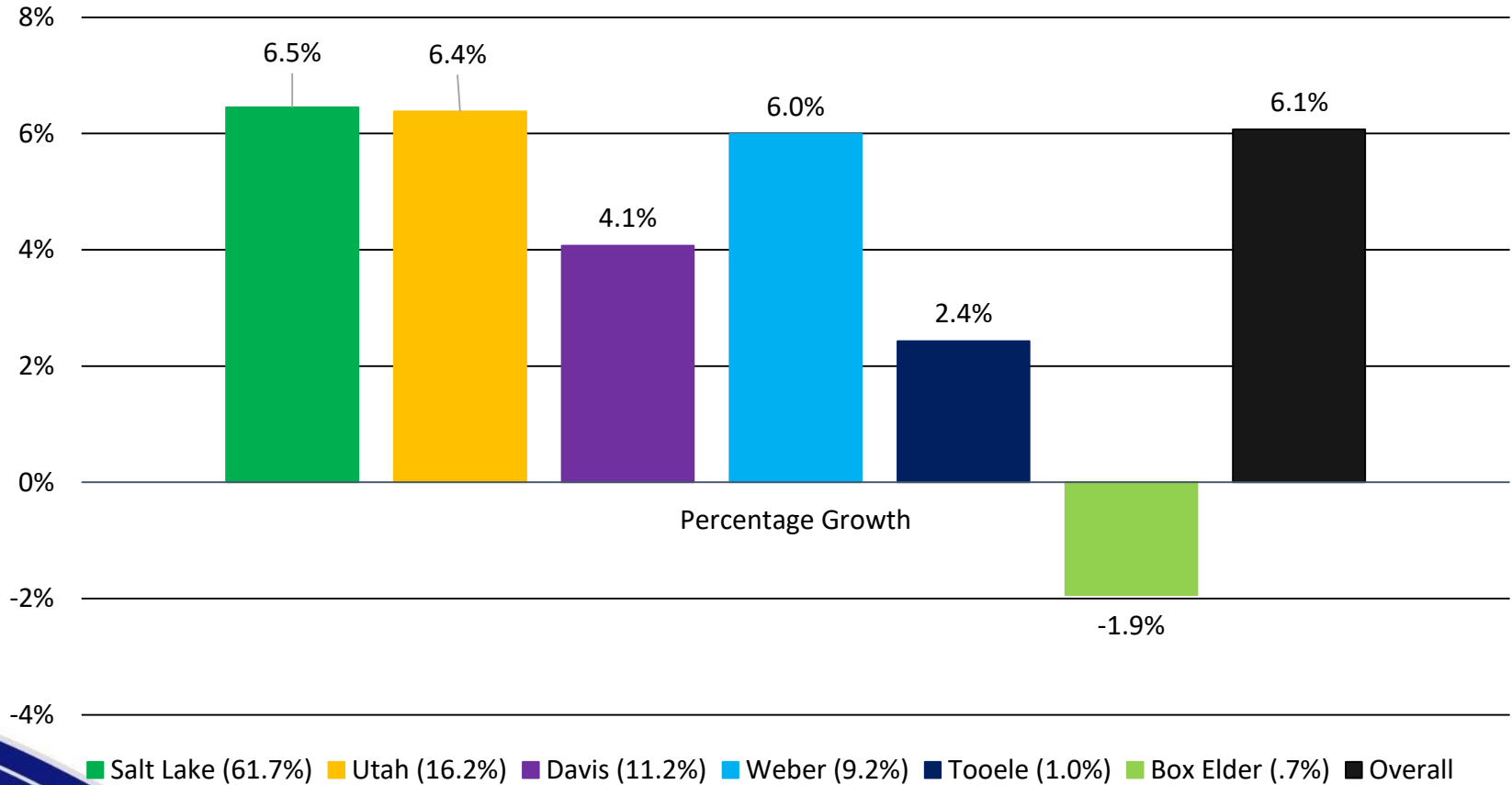
UTA Sales Tax Growth (2012 to 2018)

Percent

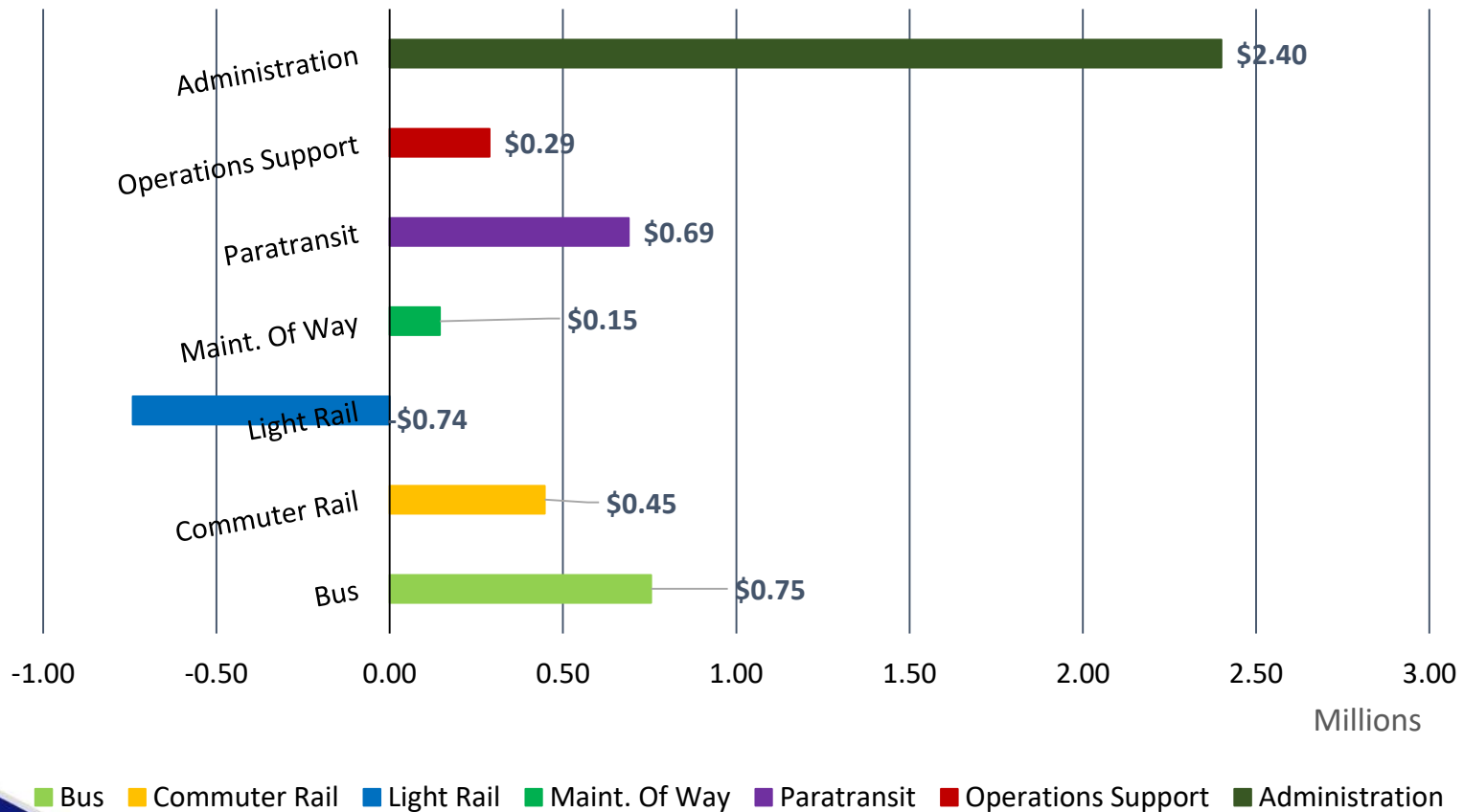


Sales Tax Collections

(2019 over 2018 for 12 months ended January 31)

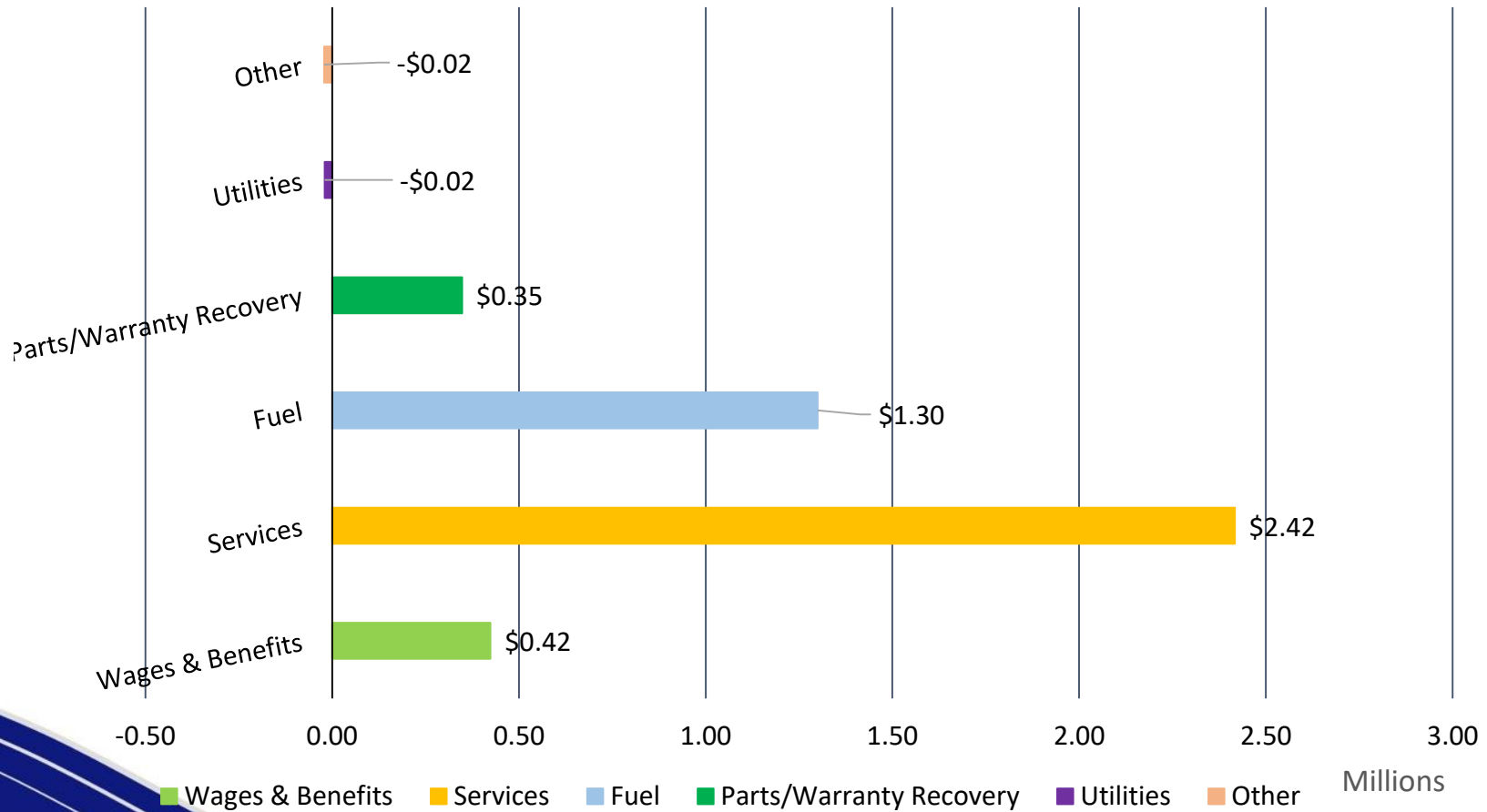


YTD 2019 Expense Thru March 31 Variance by Mode



YTD 2019 Expense Thru March 31

Variance by Type



Contracts and Pre-Procurements



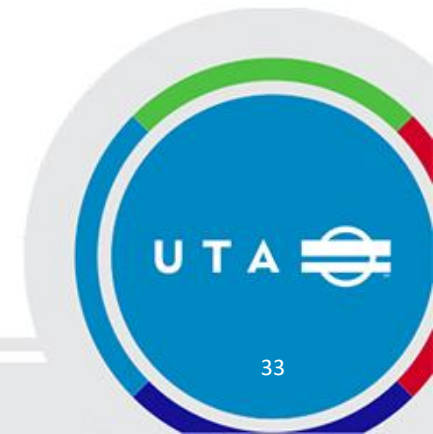
Revenue Contract Amendment: University of Utah Ed Pass

- Description and purpose:
 - UTA anticipated several system-wide fare increases over the 10-year contract term, but many of the fare increases were not implemented
 - To maintain equitable pricing, the contract amendment eliminates annual increases of the base rate per user contemplated in the original contract and holds the rate constant for the remaining three years of the contract
- Amendment value:
 - (\$1,430,101)
- Total contract:
 - \$48,708,309



Recommended Action (by roll call)

Motion to approve revenue contract amendment:
University of Utah Ed Pass



Change Order: TIGER Phase 2 Amendment 7 – Tooele County Bike Lanes

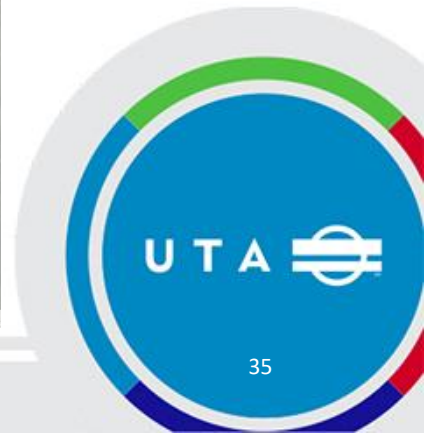
- Description and purpose:
 - Part of the Transportation Investment Generating Economic Recovery (TIGER) program of projects (includes 94 separate projects)
 - This change order is for the construction of bike lanes in Tooele County
- Total change order:
 - \$360,023
- Total contract:
 - \$7,088,009



Tooele County Bike Lanes



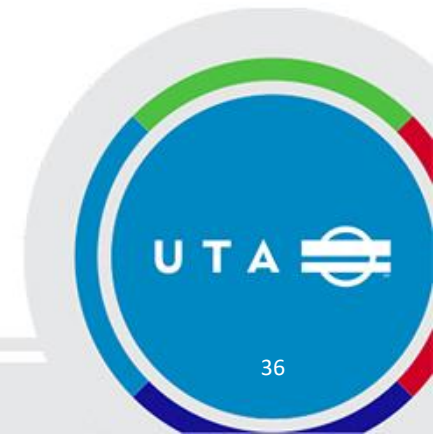
USDA FSA, Earthstar Geographics | Utah AGRC, Esri, HERE, Garmin,



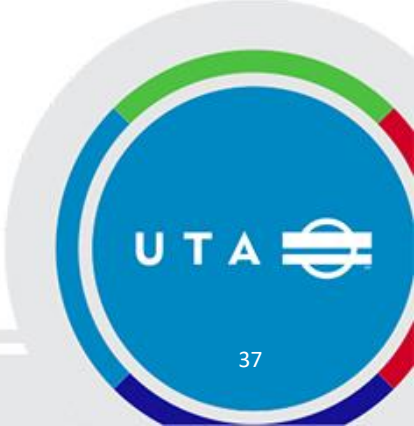
Recommended Action (by roll call)

Motion to approve change order:

TIGER Phase 2 Amendment 7 – Tooele County Bike Lanes

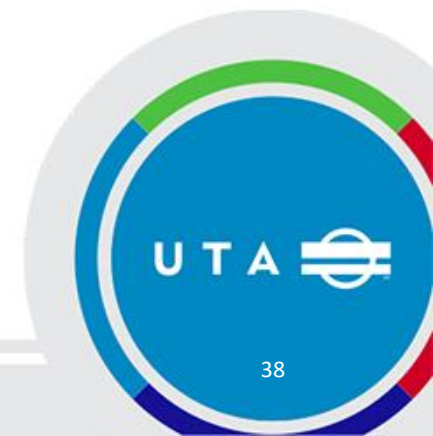


Pre-Procurement: Bond Underwriting



Other Business

- a. Next meeting: May 1, 2019 at 9:00 a.m.



Adjourn

